



IIT-Madras International Full-Time Academic Programs

#1 NIRF Overall Best
University In India
Rankings

#1 NIRF Engineering
Institute In India
Rankings

#1 NIRF Best
Innovation Category
Rankings

#2 NIRF Best Research
Institution in India
Rankings

#180 QS World
University
Ranking

#56 QS Asian
University
Rankings



IITM International Full-Time Academic Programs: (For International Students)

IIT Madras is one among the foremost Institutes in the Higher Technological education as well as Research, ranked number one in India amongst Research and Teaching Institutions in Engineering by Ministry of Education (MoE). It is also among the top 50 in Asia.

The Postgraduate programmes at the Indian Institute of Technology Madras are structured to develop the highest quality of scientific and engineering manpower and cater to the needs of industry and R&D organizations.

Postgraduate Course-Based Master's Programmes:

M.Tech., I2MP M.Tech., M.Sc., and M.A.

Academic Research-Based Programmes:

M.S and Ph.D



Postgraduate Course-Based Master's Programmes

Department wise M.Tech. Programmes:

Program: M.Tech | Duration – 2 Years

The four-semester M.Tech programmes offered by different departments of the institute are based on the credit system and provide a student with a wide choice of courses.

Each programme comprises several Core and Elective courses, project work and has a faculty advisor to help the students with the choice of academic options for elective courses. Students may be permitted to do their project work in industries and other approved organizations.

Course-Based M.Tech. Programmes:



Aerospace Engineering

M.Tech in Aerospace Engineering



Applied Mechanics and Biomedical Engineering

M.Tech in Computational and Experimental Mechanics

M.Tech in Biomedical Engineering



Biotechnology

M.Tech in Bioprocess Engineering



Chemical Engineering

M.Tech in Chemical Engineering



Civil Engineering

- M.Tech in Civil Engineering with Specialization in Building Technology, Construction Materials and Management.
- M.Tech in Civil Engineering with Specialization in Environmental Engineering.
- M.Tech in Civil Engineering with Specialization in Geotechnical Engineering
- M.Tech in Civil Engineering with Specialization in Hydraulics & Water Resources Engineering
- M.Tech in Civil Engineering with Specialization in Structural Engineering
- M.Tech in Civil Engineering with Specialization in Transportation Engineering



Electrical Engineering

M.Tech in Electrical Engineering

- Communication & Signal Processing
- Power Systems & Power Electronics
- Microelectronics and VLSI Design
- Control and Optimization
- RF and Photonics
- Integrated Circuits & Systems
- Electronic System Design and Instrumentation



Engineering Design

M.Tech in Electric Vehicles



Mechanical Engineering

M.Tech in Mechanical Engineering

- Thermal Engineering
- Mechanical Design
- Manufacturing Engineering



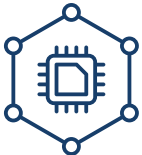
Ocean Engineering

- M.Tech in Ocean Structures
- M.Tech in Ocean Technology
- M.Tech in Petroleum Engineering



Metallurgical & Materials Engineering

M.Tech in Metallurgical & Materials Engineering



Computer Science Engineering

M.Tech in Computer Science and Engineering



Data science and AI

M.Tech in Data science and AI



Mathematics

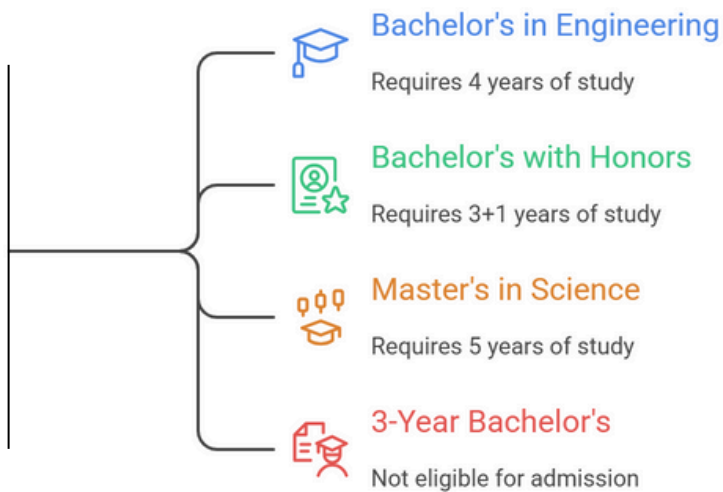
M.Tech in Industrial Mathematics and Scientific Computing



Physics

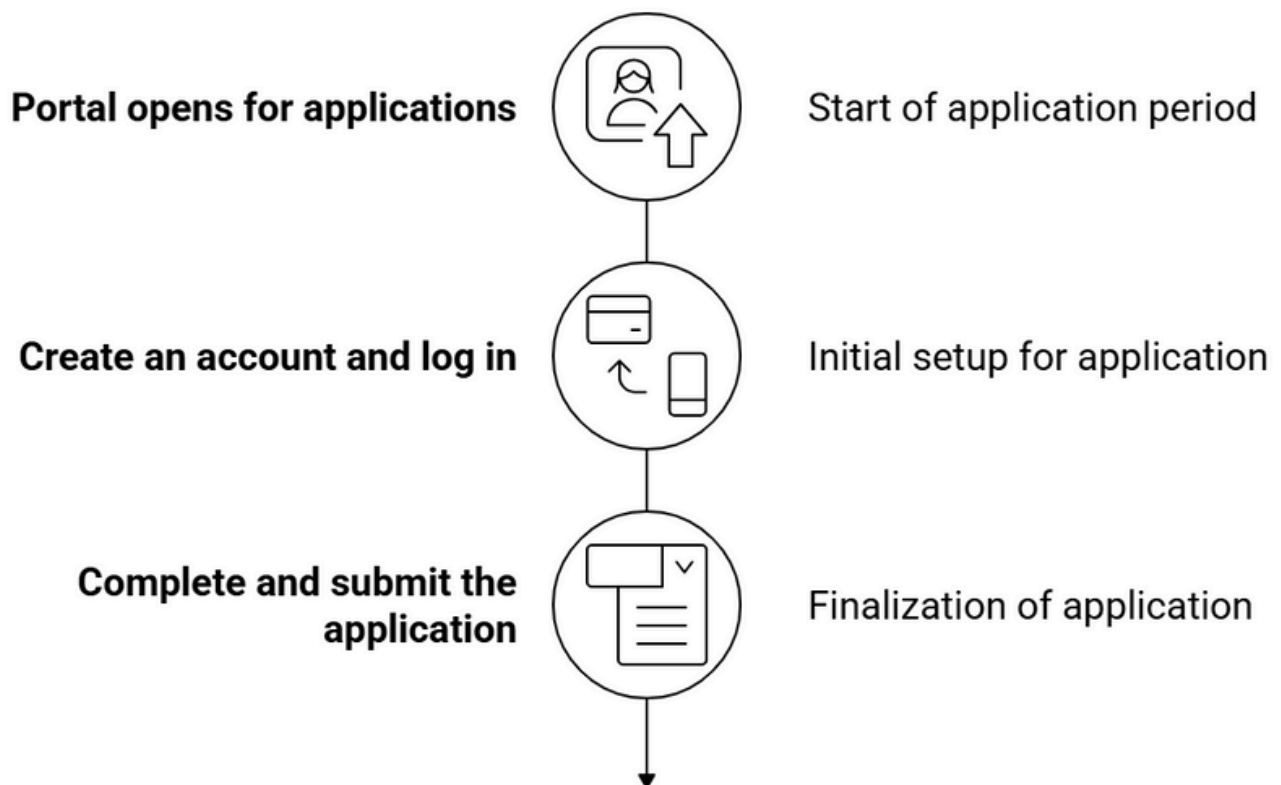
M.Tech in Functional Materials and Nanotechnology

Eligibility Criteria:



How to Apply?

Applicants need to create an account and log in to admissions.ge.iitm.ac.in, once the portal opens for accepting applications.



How to Apply?

Applicants need to create an account and log in to admissions.ge.iitm.ac.in, once the portal opens for accepting applications.

Applicant Instructions and Guidelines:

Please review the instructions provided through the link below to gain a thorough and comprehensive understanding of the guidelines.



admissions.ge.iitm.ac.in

Scholarships



GE Scholarship Scheme

Provides attractive scholarships and monthly living allowances to outstanding international students



ICCR Scholarship Scheme

Requires mandatory application submission through the ICCR Portal

Admissions Support:

If you have any queries or need assistance, please reach out to us at intl.admissions@ge.iitm.ac.in.

For more details scan here



ge.iitm.ac.in/programs/student-inbound

Department wise I2MP M.Tech. Programmes:

Program: I2MP M.Tech | Duration – 2 Years

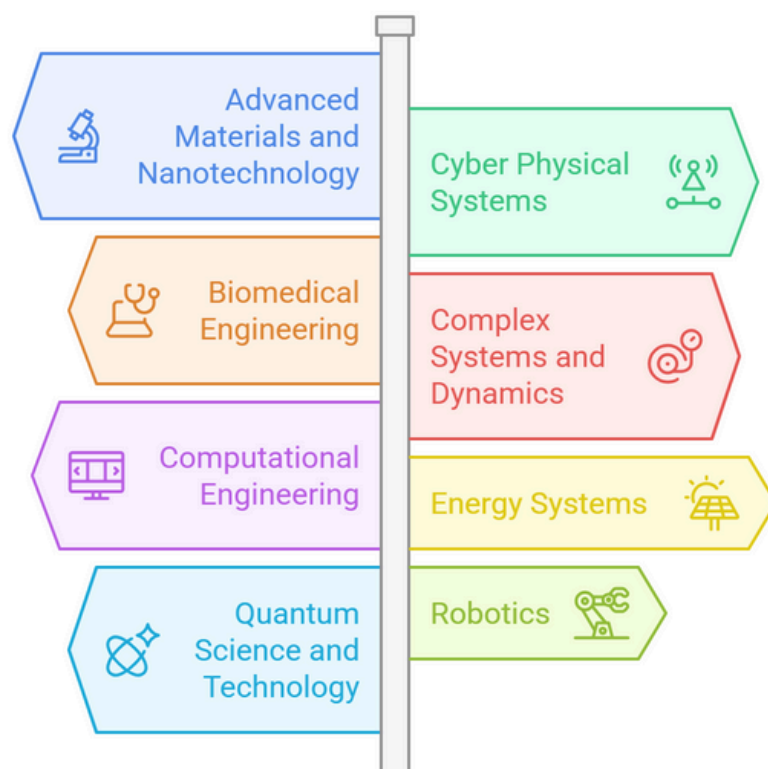
The Four-semester International **Interdisciplinary Master's Programs** are specially curated 2 Year programs that provide international students from any engineering background with a great opportunity to be part of the vibrant world-class learning environment at IIT Madras.

The 2-year program is offered over 4 Semesters. Students complete Core Courses, Electives (Free and Core) and a Research project.

The core courses are designed to give a complete overview of the entire domain, students are free to choose electives that will enable them to chalk out a further path of their choice. A large set of carefully selected electives are provided which will the student to explore a particular aspect of the program according to their area of interest.

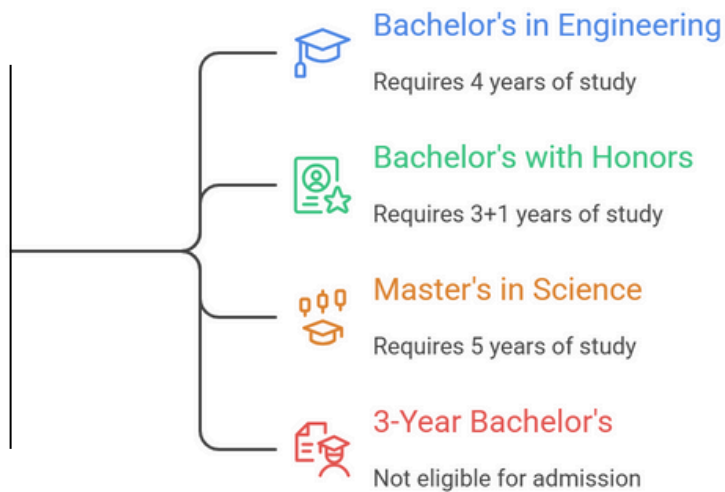
The Thesis will involve one year of work completed in third and fourth semester and will be supervised by faculty from IIT Madras.

Course-Based I2MP M.Tech. Programmes:



The Biomedical Engineering program comes under the Department of Applied Mechanics and Biomedical Engineering, while the other programs come under the School of Interdisciplinary Studies (SIDIS).

Eligibility Criteria:



How to Apply?

Applicants need to create an account and log in to **admissions.ge.iitm.ac.in**, once the portal opens for accepting applications.

Applicant Instructions and Guidelines:

Please review the instructions provided through the link below to gain a thorough and comprehensive understanding of the guidelines. These instructions are designed to assist candidates and ensure a smoother application process.

 **admissions.ge.iitm.ac.in**

Scholarships:

GE Scholarship Scheme:

International students are provided attractive scholarships to outstanding students, including a monthly living allowance subject to terms and conditions.

ICCR Scholarship Scheme:

To proceed with your application, submission of the scholarship application through the ICCR Portal (**<http://a2ascholarships.iccr.gov.in/home/register>**) is mandatory.

Admissions Support:

If you have any queries or need assistance, Please reach out to us at **intl.admissions@ge.iitm.ac.in**



For more details scan here
ge.iitm.ac.in/programs/student-inbound

Department wise M.Sc. Programmes:

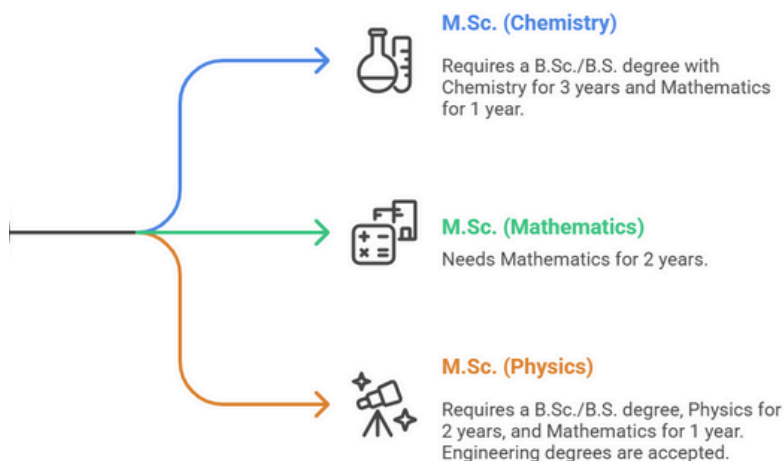
Program : M.Sc | Duration – 2 Years

The 2 Year M.Sc. program is designed to provide a comprehensive foundation in fundamental research, combining core principles, hands-on laboratory experience, and exposure to innovative research areas to prepare students for advanced study and professional careers.

Course-Based M.Sc Programmes:

Departments	Degree Offered
Chemistry	M.Sc in Chemistry
Mathematics	M.Sc in Mathematics
Physics	M.Sc in Physics

Eligibility Criteria:



How to Apply?

Applicants need to create an account and log in to **admissions.ge.iitm.ac.in**, once the portal opens for accepting applications.

Good working knowledge of English with a Minimum CGPA of 7.0/10.0 (or) its equivalent/First class

Applicant Instructions and Guidelines:

Please review the Instructions in the link below to gain thorough and comprehensive understanding of the guidelines.

 <https://admissions.ge.iitm.ac.in>

Scholarships:

GE Scholarship Scheme:

International students are provided attractive scholarships to outstanding students, including a monthly living allowance subject to terms and conditions.

ICCR Scholarship Scheme:

To proceed with your application, submission of the scholarship application through the ICCR Portal (<http://a2ascholarships.iccr.gov.in/home/register>) is mandatory.

Admissions Support:

If you have any queries or need assistance, Please reach out to us at intl.admissions@ge.iitm.ac.in



For more details scan here

ge.iitm.ac.in/programs/student-inbound

Department wise M.A Programmes:

Our decades old investment in our conviction, our quest for meaningful and organic education, and our aspiration for internationalization guided our plunge into 2-year M.A programs in Development Studies, Economics and English Studies.

Department	Degree Offered
Humanities & Social Sciences (HSS)	M.A in Economics
	M.A in Development Studies
	M.A in English Studies

Each Stream seeks to provide both an excellent theoretical base as well as Market-Readiness for diverse careers spanning from Academia to Corporate Consultancy.

Eligibility Criteria:

- Candidates must have completed Bachelor's degree in the Relevant/Appropriate Discipline from a Recognized University or Institution.
- Good working knowledge of English with a Minimum CGPA of 7.0/10.0 (or) its Equivalent/First class.

How to Apply?

Applicants need to create an account and log in to admissions.ge.iitm.ac.in, once the portal opens for accepting applications.

Applicant Instructions and Guidelines:

Kindly be advised to review the instructions provided through the link below to gain a thorough and comprehensive understanding of the guidelines.

 <https://admissions.ge.iitm.ac.in>

Scholarships:

GE Scholarship Scheme:

International students are provided attractive scholarships to outstanding students, including a monthly living allowance subject to terms and conditions.

ICCR Scholarship Scheme:

To proceed with your application, submission of the scholarship application through the ICCR Portal (<http://a2ascholarships.iccr.gov.in/home/register>) is mandatory.

Admissions Support:

If you have any queries or need assistance, Please reach out to us at intl.admissions@ge.iitm.ac.in



For more details scan here

ge.iitm.ac.in/programs/student-inbound

Department wise Research-Based Ph.D. Programmes:

There are several opportunities available for Research-minded students to hone their research skills and be part of pioneering research studies through Ph. D and Regular M.S programmes.

Research is also carried out in the interdisciplinary areas among the Departments which may be pursued by the Research scholars for the Ph. D and M.S degree.

The Engineering, Science, Humanities and Management departments together with the Research Centre's of IIT Madras are equipped with excellent laboratories and facilities with state-of-the-art equipment.

Research-Based Ph.D. Programmes:

Departments



Aerospace Engineering



Applied Mechanics and Biomedical Engineering



Biotechnology



Chemical Engineering



Civil Engineering



Electrical Engineering



Mechanical Engineering



Ocean Engineering



Metallurgical & Materials Engineering



Engineering Design



Computer Science Engineering



Data Science and AI



Physics



Chemistry



Mathematics



Humanities & Social Sciences



School of Interdisciplinary Studies

How to Apply?

Applicants need to create an account and log in to admissions.ge.iitm.ac.in, once the portal opens for accepting applications.

Eligibility Criteria:

- Candidates must have completed both their Bachelor's degree and Master's degree in the Relevant/Appropriate Discipline from a Recognized University or Institution.
- All applicants should have a Minimum CGPA of 7.0/10.0 (or its Equivalent/First class)

Applicant Instructions and Guidelines:

Kindly be advised to review the instructions provided through the link below to gain a thorough and comprehensive understanding of the guidelines.

 <https://admissions.ge.iitm.ac.in>

Scholarships:

GE Scholarship Scheme:

International students are provided attractive scholarships to outstanding students, including a monthly living allowance subject to terms and conditions.

ICCR Scholarship Scheme:

To proceed with your application, submission of the scholarship application through the ICCR Portal (<http://a2ascholarships.iccr.gov.in/home/register>) is mandatory.

Admissions Support:

If you have any queries or need assistance, Please reach out to us at intl.admissions@ge.iitm.ac.in



For more details scan here

ge.iitm.ac.in/programs/student-inbound

Department wise Research-based M.S Programmes:

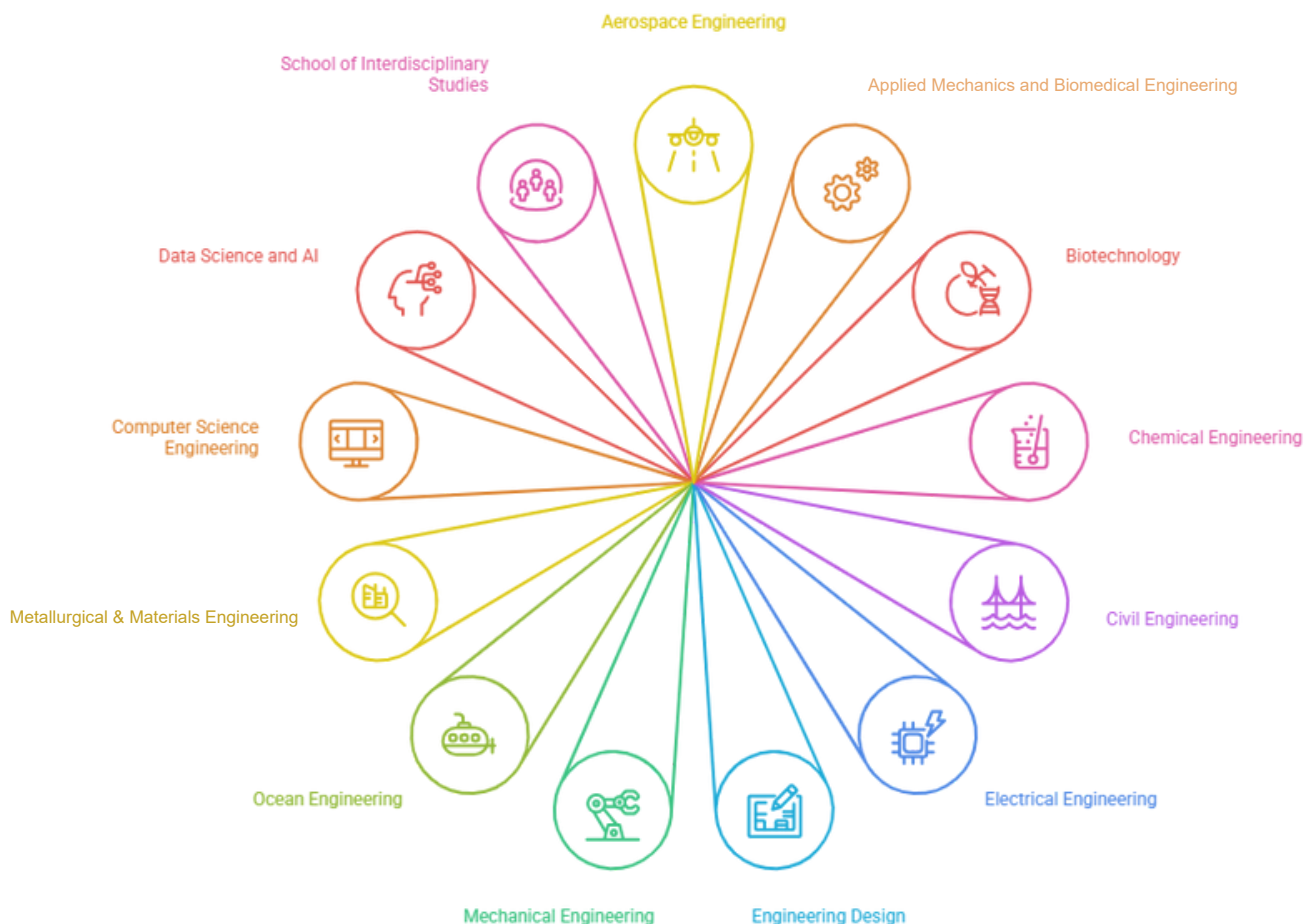
There are several opportunities available for Research-minded students to hone their Research skills and be part of pioneering research studies through the Regular M.S programme.

Research is also carried out in the Interdisciplinary areas among the Departments which may be pursued by the Research scholars for the M.S Degree.

Research-Based M.S Programmes:

The Engineering, Science, Humanities departments together with the Research Centre's of IIT Madras are equipped with excellent laboratories and facilities with state-of-the-art equipment.

Departments



How to Apply?

Applicants need to create an account and log in to admissions.ge.iitm.ac.in, once the portal opens for accepting applications.

Eligibility Criteria:

- Candidates must have completed Bachelor's degree in the Relevant (or) Appropriate Discipline from a Recognized University or Institution.
- All applicants should have a Minimum CGPA of 7.0/10.0 (or its Equivalent/First class)

Applicant Instructions and Guidelines:

Kindly be advised to review the instructions provided through the link below to gain a thorough and comprehensive understanding of the guidelines.

 <https://admissions.ge.iitm.ac.in>

Scholarships:

GE Scholarship Scheme:

International students are provided attractive scholarships to outstanding students, including a monthly living allowance subject to terms and conditions.

ICCR Scholarship Scheme:

To proceed with your application, submission of the scholarship application through the ICCR Portal (<http://a2ascholarships.iccr.gov.in/home/register>) is mandatory.

Admissions Support:

If you have any queries or need assistance, Please reach out to us at intl.admissions@ge.iitm.ac.in



For more details scan here

ge.iitm.ac.in/programs/student-inbound



Important Application Guidelines for International Applicants – IIT Madras

All applications must be submitted through the GE Application portal
(web: admissions.ge.iitm.ac.in) only.

- **Important Information:** All applicants need to apply for ICCR Scholarship, ICCR application number is a must! Without this, your application cannot be submitted to any program.
- Fill out all mandatory fields (marked with *). Incomplete applications will not be considered.
- Please carefully review your application for any errors to ensure its accuracy and completeness and need to be submitted before the deadline.
- We kindly request that you thoroughly review the admission brochure to assess your eligibility before proceeding with your application for all the Full-time programs.
- Kindly select your choice of Department/Stream (M.Tech, I2MP M.Tech, M.Sc, M.A, M.S & Ph.D.) based on the specialization of your Bachelor's degree.
- The medium of instruction is English. Applicants are therefore expected to possess a strong working knowledge of the English language.
- If the Medium of Instruction for your Qualifying degree was not English, applicants must provide proof of proficiency in English.

IELTS: Minimum score of 6.5 (Overall) | TOEFL: Minimum score of 80 (Overall)

- It is mandatory to have Passport (or) National ID card ready before applying to your program of choice.
- Please upload all your academic transcripts (Consolidated Marksheets, Degree certificate) in PDF format.
- If your academic transcript (or) any of your documents are in a local language, please upload certified English translations. Applications without an English transcript won't be accepted.
- GATE scores are not a mandatory criterion for International candidates applying to Masters, M.S and Ph.D programs. Shortlisting will be based on the procedures followed by the respective departments.
- If you clear the Institute Eligibility norms, then the selection process of the department will be communicated to you through mail.
- Applicants are required to upload a clear image of their Passport-sized photograph with a White background where both ears are clearly visible.
- Applicants are required to upload a clear image of their Signature in JPG format, ensuring it is legible and free from any smudges.
- Candidates applying for M.S and Ph.D programs should submit a Statement of Purpose (SOP) along with their application.
- OCI cardholders must compulsorily reside outside of India to be eligible to apply for all the Full-time programs.